

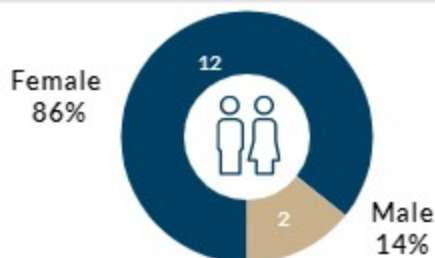
# MSHS in Physician Assistant New Class Profile – Class of 2027 PA/MPH



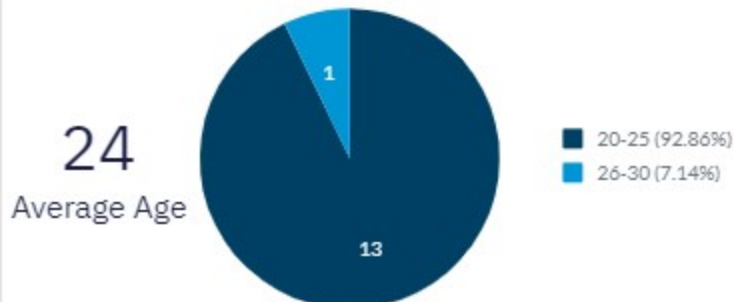
Data based on 14 new enrollees to the 3-year PA/MPH program.

## STUDENT DEMOGRAPHIC PROFILE

### Gender



### Age at Matriculation



### Location

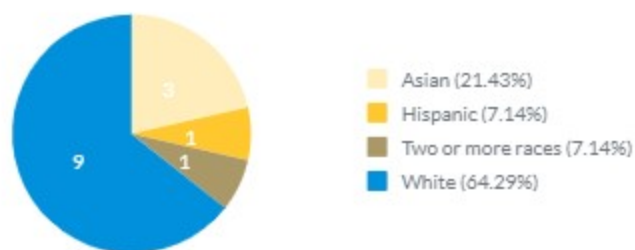


79% (11)

Non -DMV  
Residents

10 STATES REPRESENTED  
(light blue)

### Race/Ethnicity



### Socio-Economic Background

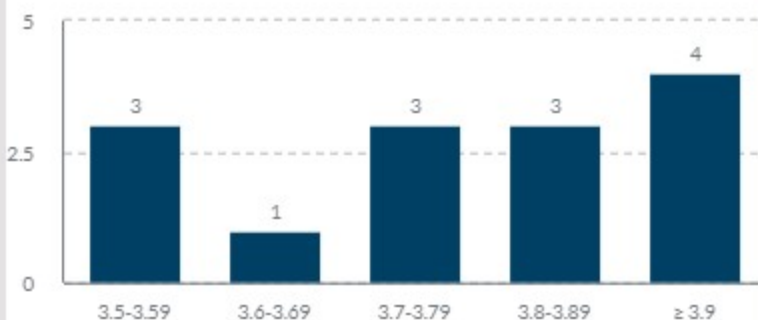
29% (4)  
First-Generation  
Students



29% (4)  
Economically  
Disadvantaged  
Students

## EDUCATIONAL AND PROFESSIONAL BACKGROUND

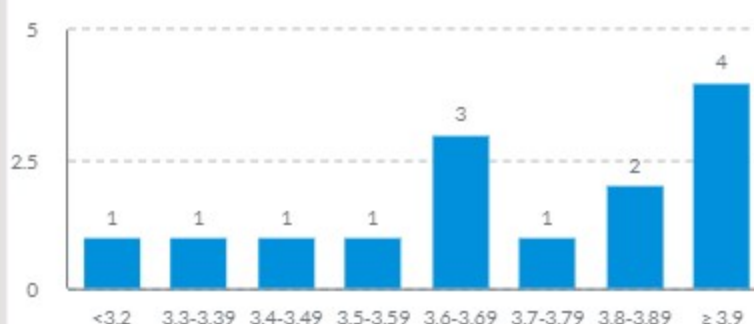
### Entering Overall GPA



Median Overall GPA: 3.80

Average Overall GPA: 3.78

### Entering Science GPA



Median Science GPA: 3.70

Average Science GPA: 3.69

# MSHS in Physician Assistant New Class Profile – Class of 2027 PA/MPH



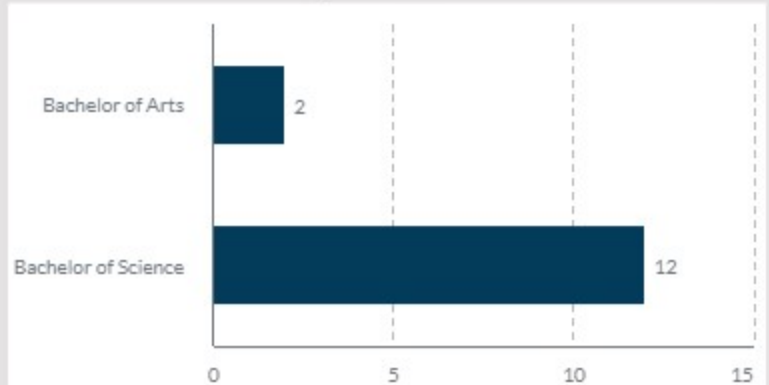
Direct Patient Contact Hours 

3547 Average Hours      2345 Median Hours

## Major History



## Enrollment History



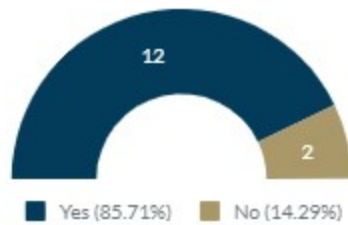
Note: A student may have one or more enrollment history records.

**86%(12)**  
With Bachelor of  
Science Degree

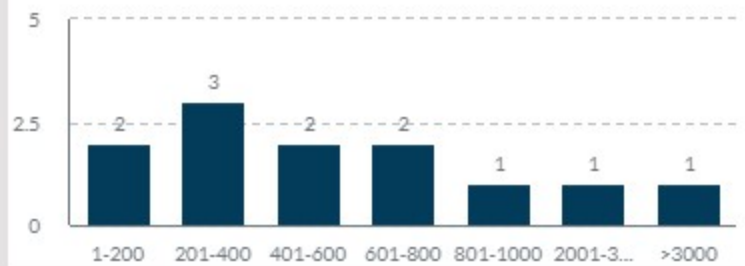
**14%(2)**  
With Bachelor of  
Arts Degree

## LEADERSHIP ROLES

### Leadership Experience



### Leadership Experience Hours



## COMMUNITY SERVICES AND VOLUNTEER EXPERIENCES

### Volunteer Experiences



### Volunteer Experience Hours

